



# **Bartels AutoEngineer®**

## **Version 5.0**

### **Highlights**

---

This document contains illustrated information about significant new features introduced with **Bartels AutoEngineer Version 5.0**.

---

**Bartels AutoEngineer Version 5.0 Highlights**

Published by: Bartels System GmbH, Erding

Last printing: November 2003

The information contained within the Bartels AutoEngineer publications as well as the products and/or programs described therein are subject to change without notice and should not be construed as a commitment by Bartels System.

Although Bartels System has gone to great effort to verify the integrity of the information provided with the Bartels AutoEngineer publications, these publications could contain technical inaccuracies or typographical errors. Bartels System shall not be liable for errors contained therein or for incidental consequential damages in connection with the furnishing, performance, or use of this material. Bartels System appreciates readers' and/or users' comments in order to improve these publications and/or the products described therein. Changes are periodically made to the information therein. These changes will be incorporated in new editions of the Bartels AutoEngineer publications.

All rights reserved. No part of the Bartels AutoEngineer publications may be reproduced, stored in a retrieval system, translated, transcribed, or transmitted, in any form or by any means manual, electric, electronic, electromagnetic, mechanical, chemical, optical, or otherwise without prior express written permission from Bartels System.

Bartels AutoEngineer®, Bartels Router®, and Bartels Autorouter® are registered trademarks of Bartels System. Bartels User Language™ and Bartels Neural Router™ are trademarks of Bartels System. All other products or services mentioned in this publication are identified by the trademarks or service marks of their respective companies or organizations.

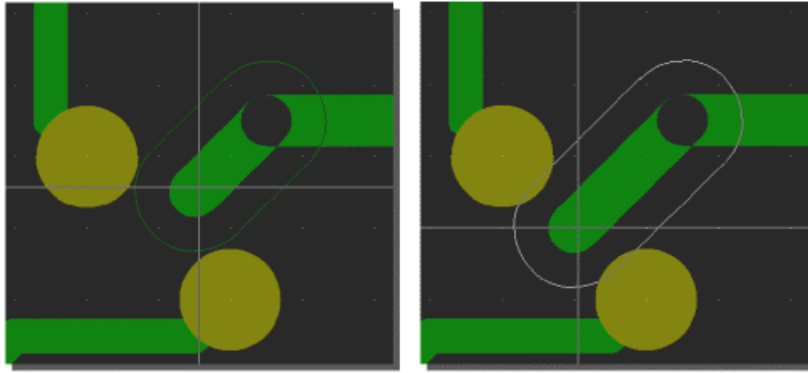
Copyright © 1986-2003 by Oliver Bartels F+E  
All Rights Reserved  
Printed in Germany

## **Contents**

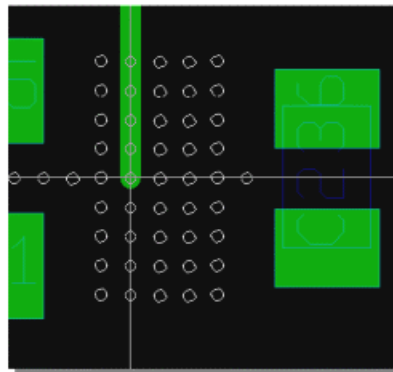
Real-time Design Rule Check during Manual Routing .....	5
Valid Via Position Display during Manual Routing .....	5
Pin/Gate Swap .....	5
Height Design Rule Check .....	6
DRC Error Display .....	6
Automatic Keepout Area Generation for Board Outline and Milling Contours .....	6
Element Selection for Multiple Elements at Pick Position .....	7



### Real-time Design Rule Check during Manual Routing



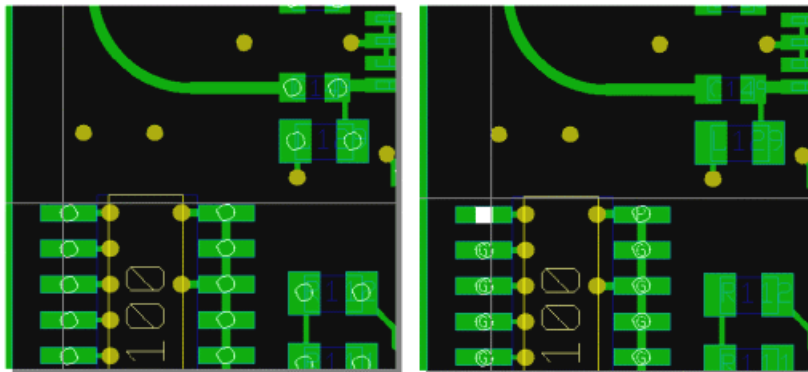
### Valid Via Position Display during Manual Routing



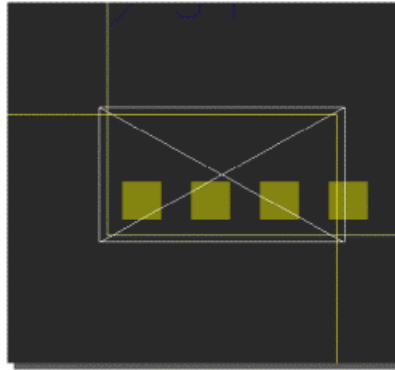
### Pin/Gate Swap

Displaying swappable Pins/Gates...

...and possible Swap Partners

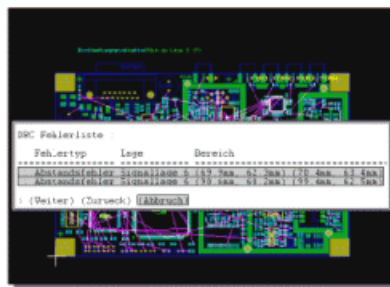


### Height Design Rule Check

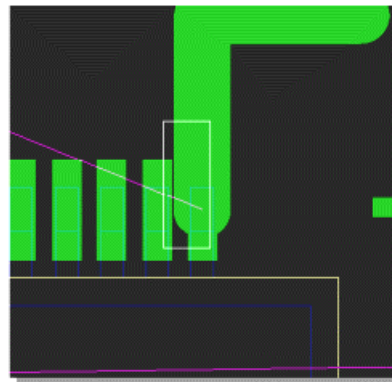


### DRC Error Display

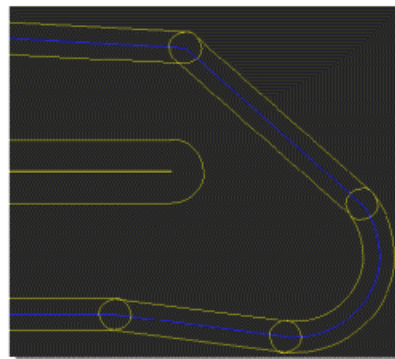
DRC Error Listing...



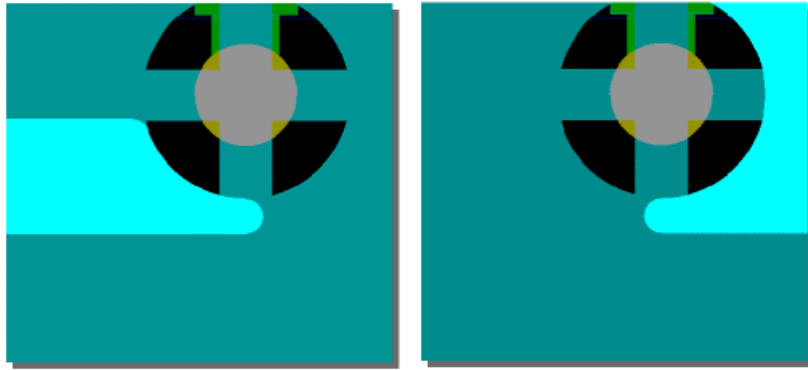
...and Zoom to Selected Error



### Automatic Keepout Area Generation for Board Outline and Milling Contours



### Element Selection for Multiple Elements at Pick Position



---

Please see the [Bartels AutoEngineer® Version 5.0 Release Notes](#) for a detailed description of all new **BAE Version 5.0** features.